

.com

One site, infinite insight

Home | News | Services | Indonesia Exchange | Lifestyle

Keyword :  Quotes

LOOK UP CODE

Ad Info | Member Area | About Us | Career Opportunity | Contact Us | Help

Welcome...  
English | Indonesia

Markets & Quotes

Member Login

User ID:   
Password:

Log In

Register here for FREE!  
Forget UserID or Password



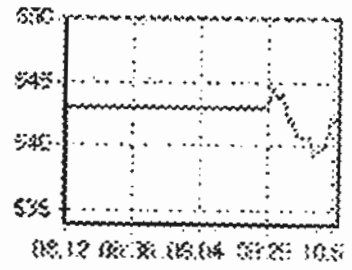
JSX Indices

Last Update: April 24, 2002 11:23:28 AM

Sector	Last	Chg	%Chg
COMPOSITE	544.42	1.36	0.25 %
AGRI	191.67	0.24	0.12 %
BASIC-IND	49.38	-0.08	-0.16 %
CONSUMER	186.83	1.6	0.86 %
FINANCE	60.63	-2.04	-3.26 %
INFRASTR	154.25	2.25	1.48 %
LQ45	119.96	0.19	0.16 %
MANUFTR	119.81	0.72	0.6 %
MINING	135.61	-0.41	-0.3 %
MISC-IND	101.33	0.41	0.41 %
PROPERTY	33.16	-0.07	-0.21 %
TRADE	143.96	0.78	0.54 %
JII	88.1	0.33	0.38 %

JSX Composite Index

Intra Day Chart - Composite Index -



Quotes Big Chart :  
[3M | 1Y | 3Y | 1d]

- Home
- Markets & Quotes
  - Quotes Chart
  - Quarterly Financial Report
  - Listed Company
  - Currency Chart
  - Indo Dollar
  - PEFINDO Rating
  - Securities and Brokerage
  - Mutual Fund Management
  - Mutual Funds Returns
  - BNI Securities

Resource Centers

**Find & Select a broker** for your stock and mutual funds investment in our Resource Centers that include:

- Securities and Brokerages
- Mutual Fund Managements
- Real Time Forex

Calendar

Check out the schedule of:

- Shareholders' Meeting
- Public Expense

Rule & Regulation

Indonesia Capital Market Rules & Regulations

Quarterly Index Report

List of companies. Presenting their Quarterly financial performance reports. Click here to view their

First Call Projection

2001-2002 Projections

Select

Provided by First Call  
A Thomson Financial Company

IMQ Stock Quotes

Looking for direct access to real-time JSX Stock Quotes and graphs? Subscribe now... IMQ stock quote service and we give you a free 12-day trial period.

A B C D E F G H I J K L M N P R S T U V W Z

COMPANY	2001				2000				1999				1998	
	9M	6M	3M	12M	9M	6M	3M	12M	9M	6M	3M	12M	9M	€
<u>Bahtera Adimina Samudra Tbk</u>	A		A	A	A	A	A	A	A				A	
<u>Bakrie &amp; Brothers Tbk</u>		A	A	A	A	A	A	A	A	A	A	A	A	
<u>Bakrie Finance Corporation Tbk</u>		A		A	A	A	A	A	A	A	A	A	A	
<u>Bakrie Sumatra Plantation Tbk</u>		A	A	A	A	A	A	A	A	A	A	A	A	
<u>Bakrieland Development Tbk</u>		A			A	A	A	A	A	A	A		A	
<u>Bank Arta Niaga Kencana Tbk</u>	A	A	A	A										
<u>Bank Bali Tbk</u>	A	A	A	A	A	A	A	A	A			A	A	
<u>Bank Buana Indonesia Tbk</u>	A	A	A	A	A	A								
<u>Bank Central Asia Tbk</u>		A	A	A	A	A		A						
<u>Bank CIC International Tbk</u>	A	A	A	A	A	A	A		A	A	A	A	A	
<u>Bank Danamon Tbk</u>	A	A	A	A	A	A	A	A	A	A	A	A	A	
<u>Bank Danpac Tbk</u>	A	A	A	A	A	A	A							
<u>Bank Eksekutif</u>	A	A												
<u>Bank Global Internasional Tbk</u>		A	A	A	A	A	A	A	A	A	A	A	A	
<u>Bank International Indonesia Tbk</u>	A	A	A	A	A	A	A	A	A	A	A	A	A	
<u>Bank Mayapada Tbk</u>		A	A	A	A	A	A	A	A	A	A	A	A	
<u>Bank Mega Tbk</u>	A	A	A	A	A	A								
<u>Bank Negara Indonesia Tbk</u>	A	A	A	A	A	A	A	A	A		A	A	A	
<u>Bank Niaga Tbk</u>	A	A	A	A	A	A	A	A	A	A	A	A	A	
<u>Bank NISP Tbk</u>	A	A	A	A	A	A	A	A	A	A	A	A	A	
<u>Bank Nusantara Parahyangan Tbk</u>	A	A	A	A										
<u>Bank PIKKO Tbk</u>	A	A	A	A	A	A	A	A	A	A	A	A	A	
<u>Bank Universal Tbk</u>		A	A	A	A	A	A	A	A	A	A	A	A	
<u>Bank Victoria Tbk</u>	A	A	A	A	A	A	A	A	A					
<u>Barito Pacific Timber Tbk</u>	A	A	A	A	A	A	A	A	A	A	A	A	A	
<u>BAT Indonesia Tbk</u>	A	A	A	A	A	A	A	A	A	A	A	A	A	
<u>Bayer Indonesia Tbk</u>		A	A	A	A	A	A	A	A	A	A	A	A	
<u>Bayu Buana Travel Tbk</u>		A	A	A	A	A	A	A	A	A	A	A	A	
<u>BBL Dharmala Finance Tbk</u>	A	A	A	A	A	A	A	A	A	A	A	A	A	
<u>Bentoel International Investama Tbk</u>	A	A	A	A	A	A	A	A	A	A	A	A	A	
<u>Berlian Laju Tanker Tbk</u>	A	A	A	A	A	A	A	A	A	A	A	A	A	
<u>Berlina Tbk</u>		A	A	A	A	A	A	A	A	A	A	A	A	
<u>Betonjaya Manunggal Tbk</u>		A												
<u>Bhakti Capital Tbk</u>		A												
<u>Bhakti Investama Tbk</u>	A	A		A	A	A	A	A	A	A		A	A	
<u>Bhuwanatala Indah Permai Tbk</u>		A			A	A		A	A	A	A	A	A	

## PT. CONCORD BENEFIT Tbk.

Home	CNBE Concord Benefit Enterprises
• <u>Company Profile</u>	Af : Sector Code : 43 Sector Name : TEXTILE, GARMENT
• <u>Board Members</u>	(In thousand rupiah except Par Value, Closing Price and Ratios)
Financial Performance	Financial Statement Date : 31-Dec-2000 Fiscal Year Ends : Dec Months Covered in Income St : 12
• <u>Financial Highlights</u>	Summary of Balance Sheet
• <u>Quarterly Reports</u>	Receivables : 35,713,713.00
• <u>Audited Accounts</u>	Inventories : 11,929,901.00
	Current Assets : 65,316,535.00
	Fixed Assets : 16,485,874.00
	Other Asstes : 1,418,780.00
	Total Assets : 143,185,114.00
News, Updates, and References	Current Liabilities : 687,058,644.00
	Longterm Liabiities : 0.00
• <u>Stock Review</u>	Total Liabilities : 687,058,644.00
	Authorized : 50,000.00
• <u>News, Updates and References</u>	Paid-up Capital : 21,020,000.00
	Par Value : 1000
	Paid-up Capital Shares : 21,020.00
	Retained Earnings : -572,616,611.00
	Total Equity : -543,873,530.00
Company Contact	Minority Interest : 0.00
• <u>E-mail</u>	Summary of Income Statement
	Total Sales : 164,028,938.00
	Cost of Good Sold : 111,518,371.00
	Gross Profit : 52,510,567.00
	Operating Profit : 10,290,741.00
	Other Income : -204,361,406.00
	Eearning Before Tax : -194,243,867.00
	Tax : -57,702,806.00
	Net Income : -136,541,061.00
	Closing Price : 9,900.00
	Per Share Data (Rp)
	Eps : -6,495.77
	Book Value : -25,874.10
	Financial Ratios
	Debt Equity Ratio (X) : -1.26
	Roa (%) : -95.36
	Roe (%) : 25.11
	Npm (%) : -83.24
	Opm (%) : 6.27
	Cash Flow

CF from Operating Activities	:	6,03
CF from Investing Activities	:	-1,23
CF from Financing Activities	:	-2,05
Net Increase in Cash & Cash Equivalent	:	2,74
Cash & Cash Equivalent at The Beginning of The Year	:	10,26
Cash & Cash Equivalent at The End of The Year	:	13,00

Universitas  
Esa Unggul

Universitas  
Esa Unggul

Universitas  
Esa Unggul

Universitas  
Esa U